



portfolio

LAJOS TANCZOS

unlimited_design

Contents



PROJECTS

Commercial

Shuttleworth, Apartment and Office, Imperial Wharf, London, UK	3
NOMINT, Office, Shoreditch, London, UK	7
Somerset House, Museum Entrance Hall, Chelsea, London, UK	11
Vivienne Westwood, Exhibition Space, Imperial Wharf, London, UK	14
Cole & Son, Competition, Innovative use of wallpapers, London, UK	15

Residential

Abby Cullen, Apartment, Hoxton, London, UK	20
--	----

Furniture

Maison du Monde, Furniture, France	23
--	----

Special Studies

History of Styles Reference book, Essays	24
Window Treatments, Soft Furnishing	25

PERSONAL

Summary	26
CV	27

Lajos Tanczos

Shuttleworth

CLIENT

Orion Shuttleworth, superyacht designer

LOCATION

Imperial Wharf, Chelsea, London, United Kingdom

BRIEF

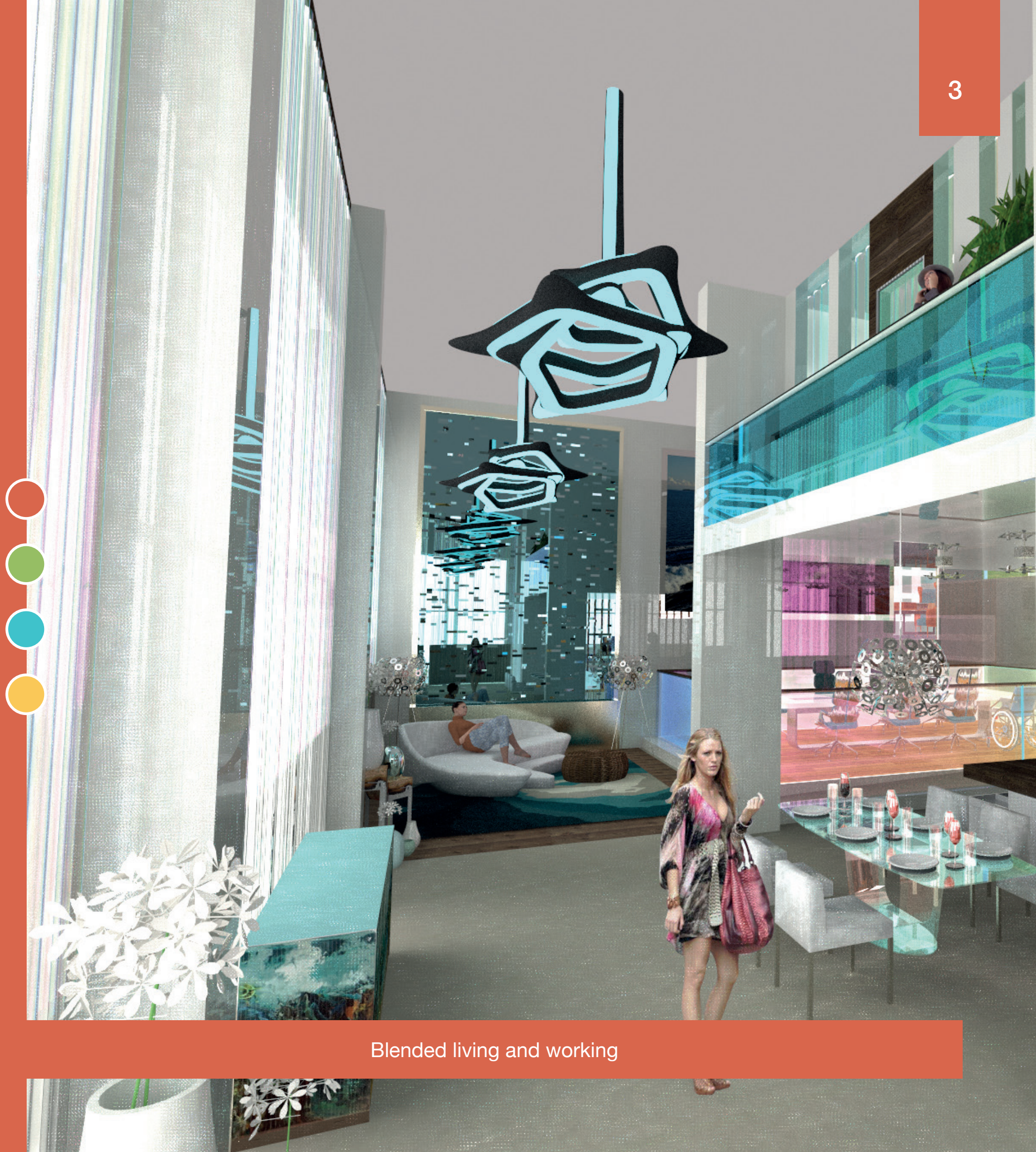
Design a permanent living space for a high-end designer including a working and an exhibition area.

TYPE

Commercial and residential design

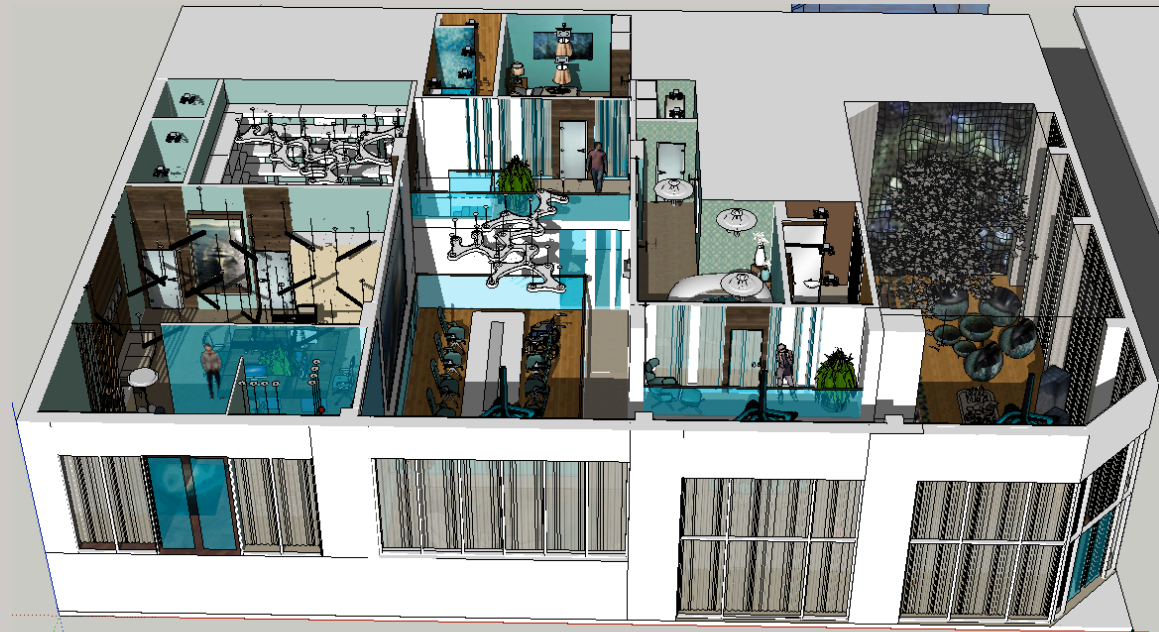
SKILLS APPLIED

Space planning, technical drawing, rendering, sourcing, 3D visual presentation, verbal presentation.



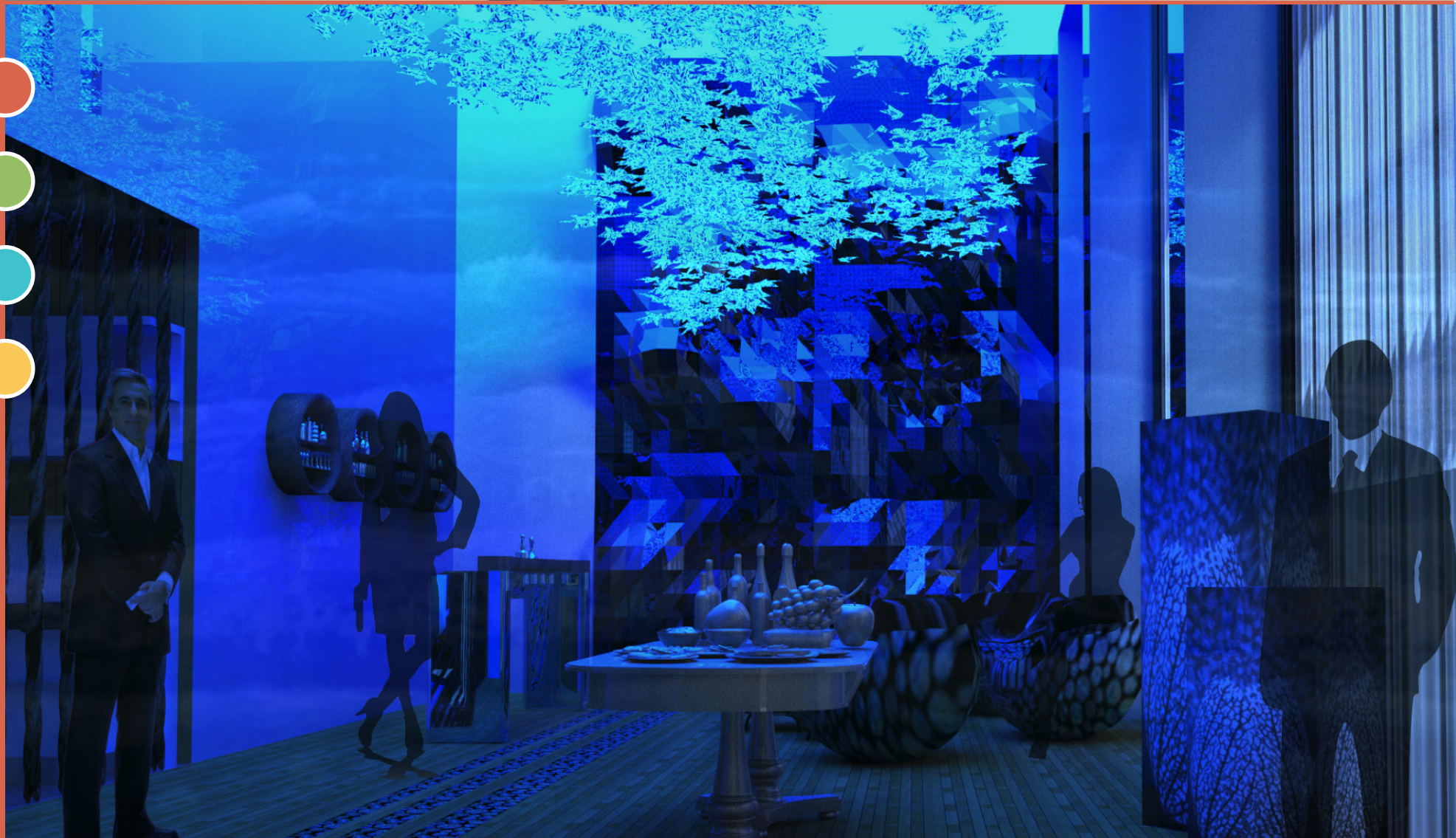
Blended living and working

CONCEPT
Sensorium

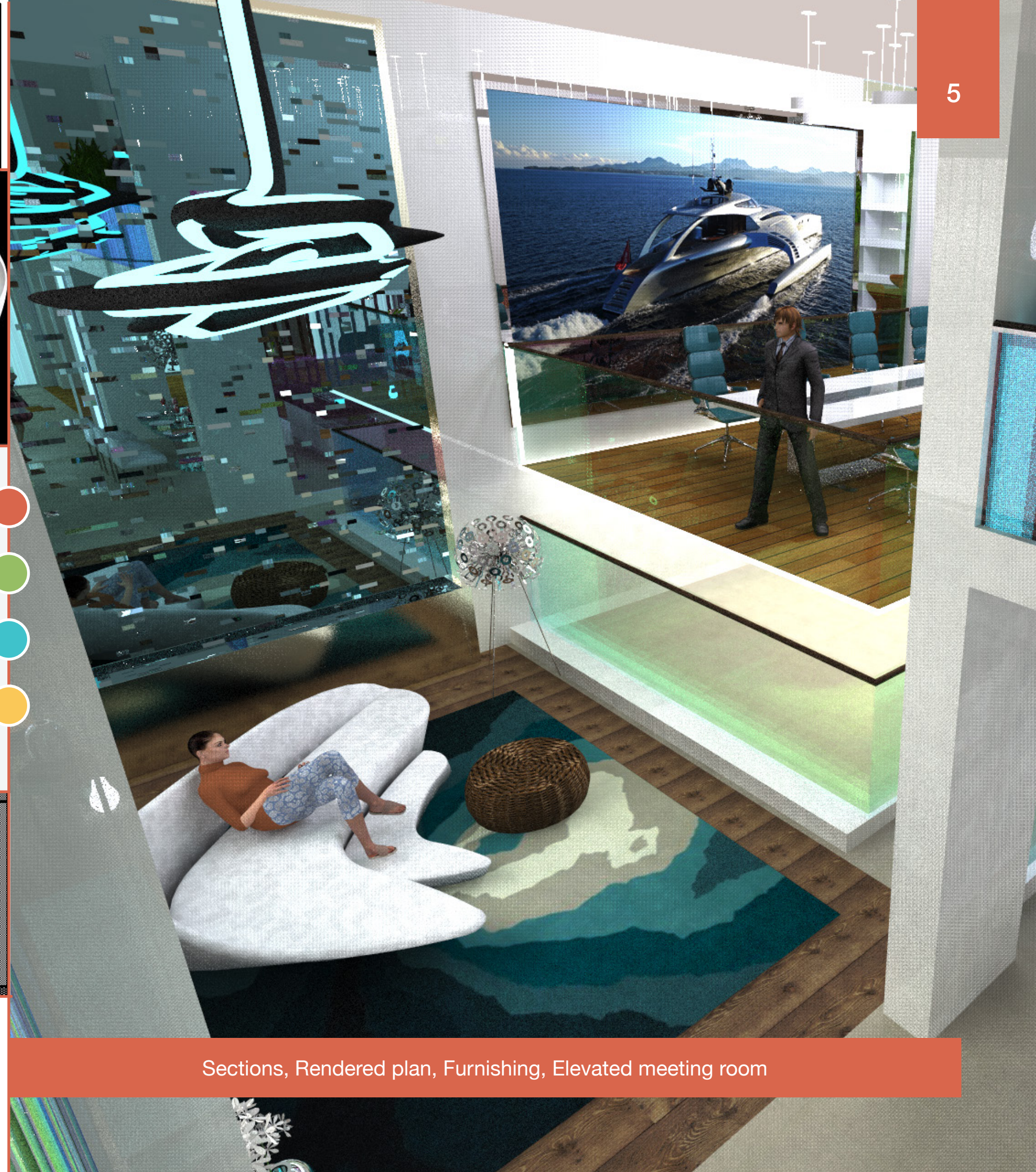
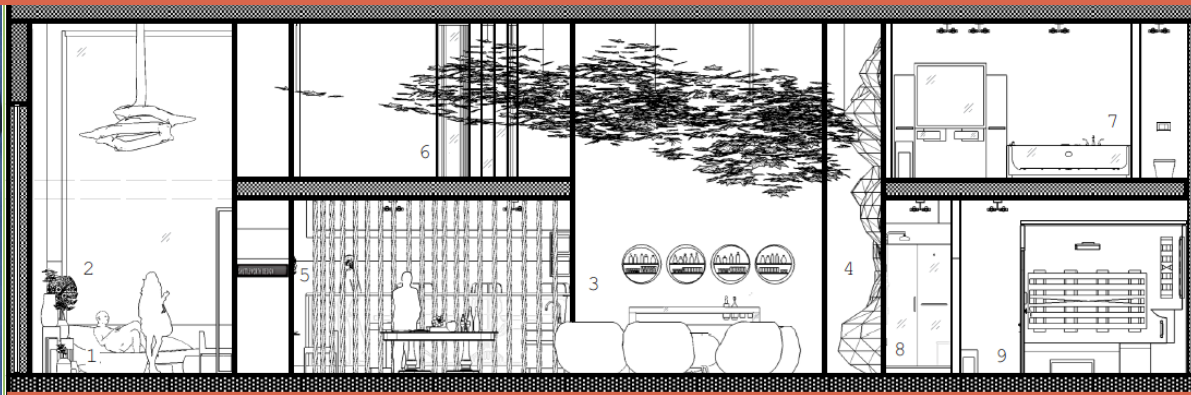
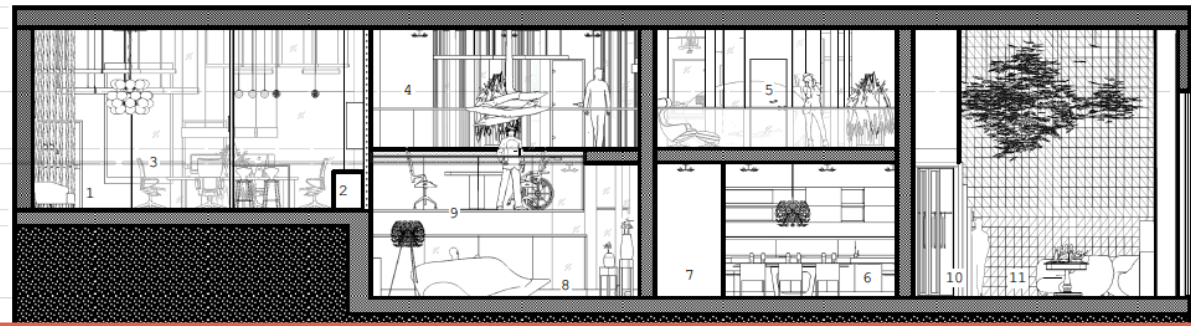


DESIGN

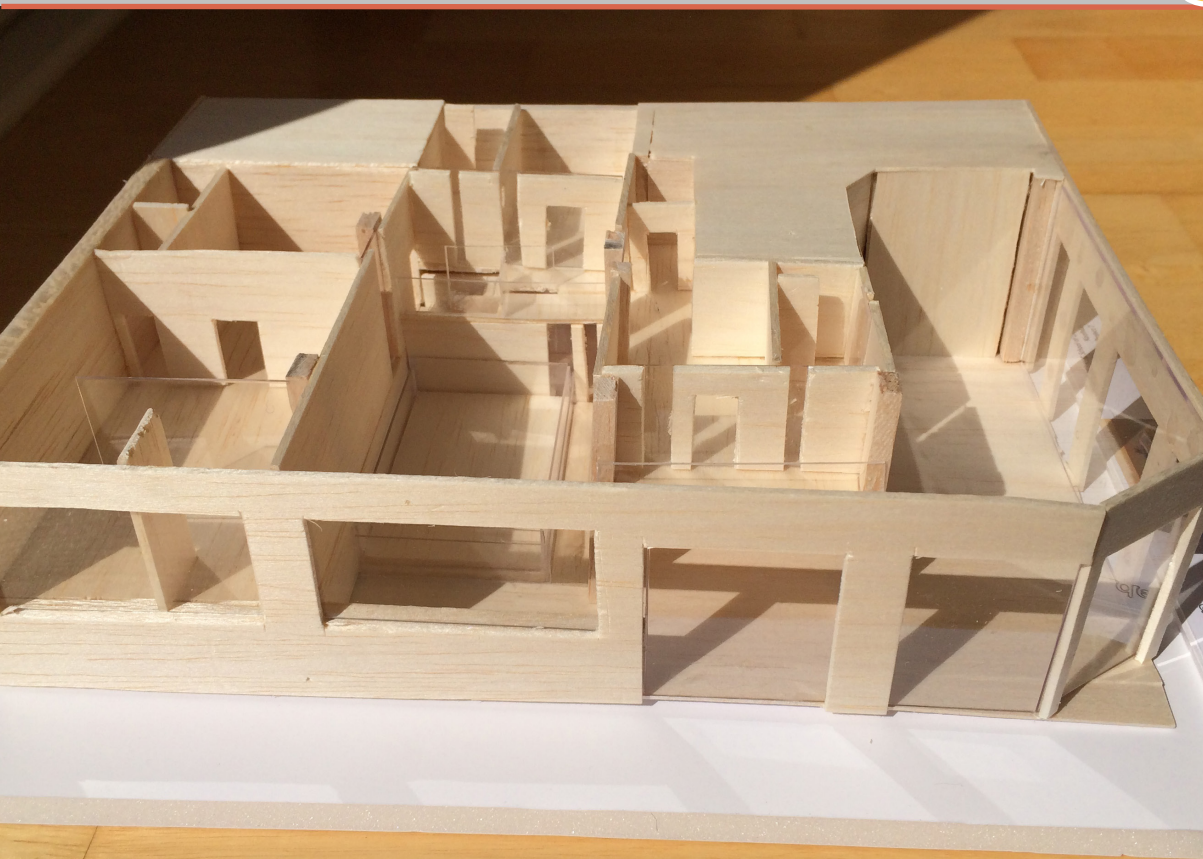
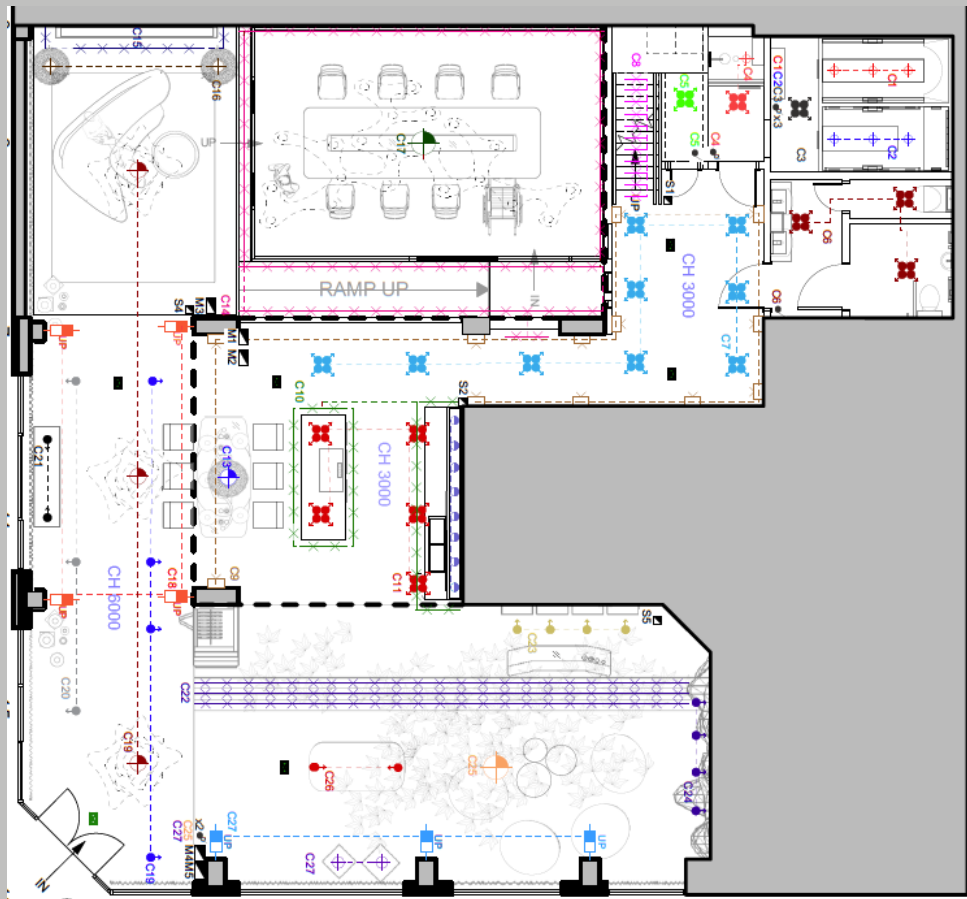
Based on the concept Sensorium the design aim was to develop a space where customers can enjoy the feeling of yachting through their senses. The design includes a Sensorium, a communal living/dining space, an office as well as private bedrooms and bathrooms.



Planning with SketchUp, Night party in the Sensorium



Sections, Rendered plan, Furnishing, Elevated meeting room



Sample presentation, Model, Lighting plan, Blended working and living

Lajos Tanczos

Nomint

CLIENT

NOMINT, an award winning animation film production agency with 19 people

LOCATION

Shoreditch, London, United Kingdom

BRIEF

The task was to design a creative office space for 19 people on two floors. A key element of the design was to develop a staircase.

TYPE

Commercial design

SKILLS APPLIED

Detailed design analysis, regulations analysis, space planning (SketchUp), technical drawing (Vectorworks) staircase planning, sourcing, visual presentation (LightUp, KeyShot), video presentation.



Adaptable space (Kitchenette, relaxation and brainstorming)

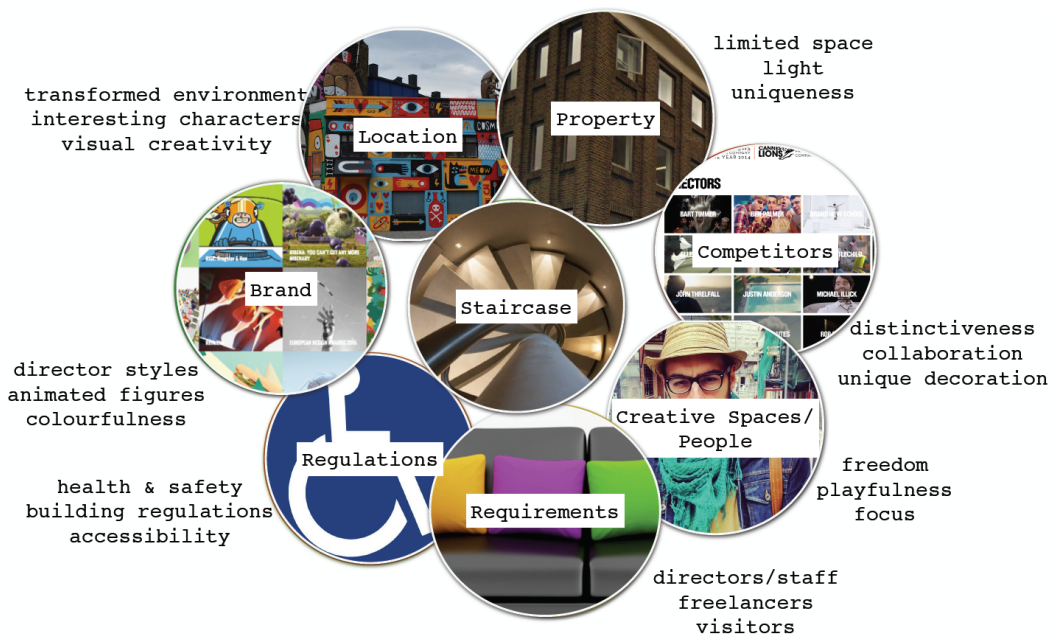
CONCEPT Adaptation



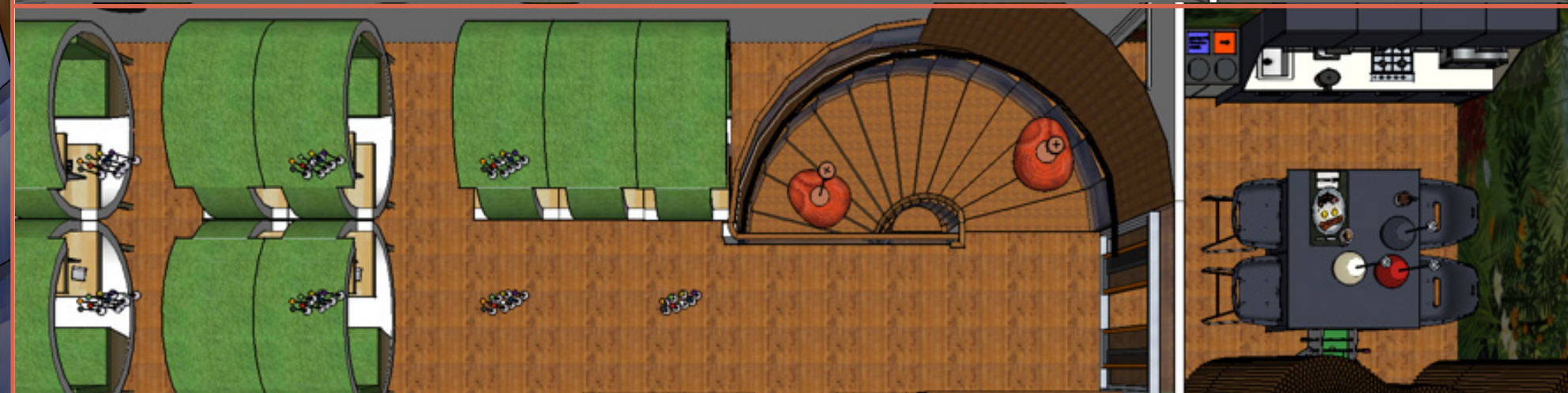
DESIGN

The concept chameleon represents the idea of adaptability to the environment, in this context the small office has to be adaptable to different needs. In my design, I have developed multi-purpose places like a kitchen / dining / relaxation room / brainstorming room and used furniture that can be flexibly used depending on the actual projects, like the special Gaia workspace (on the right).

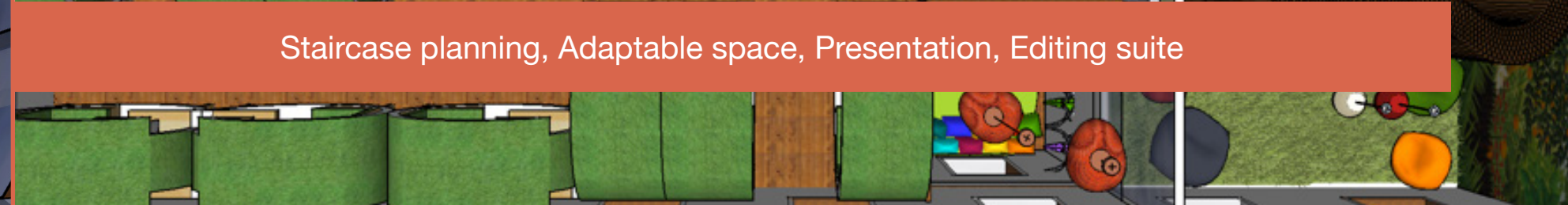
Rendered plans, Variable office space

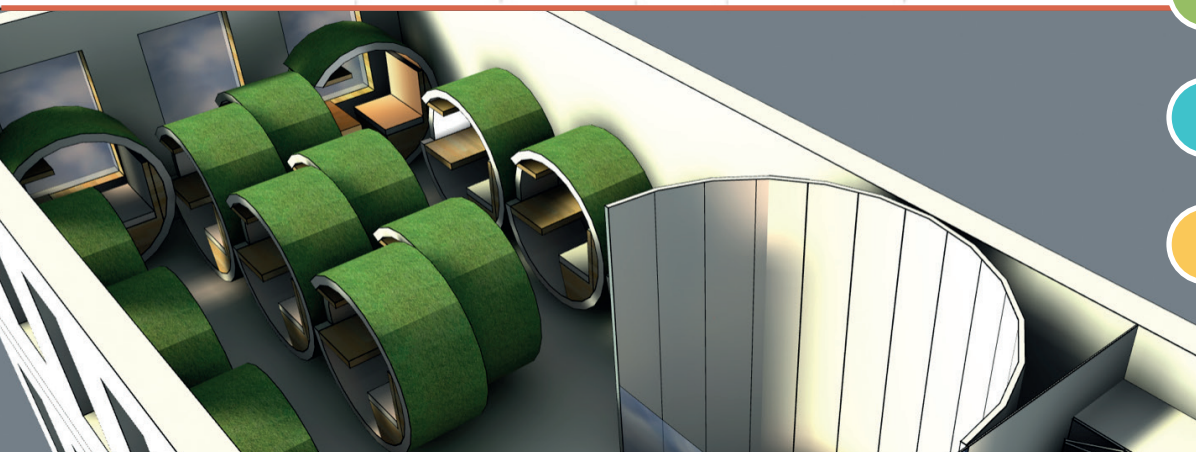
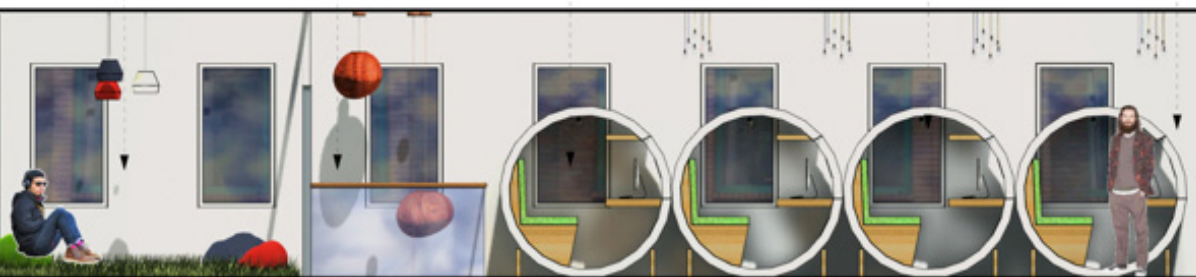
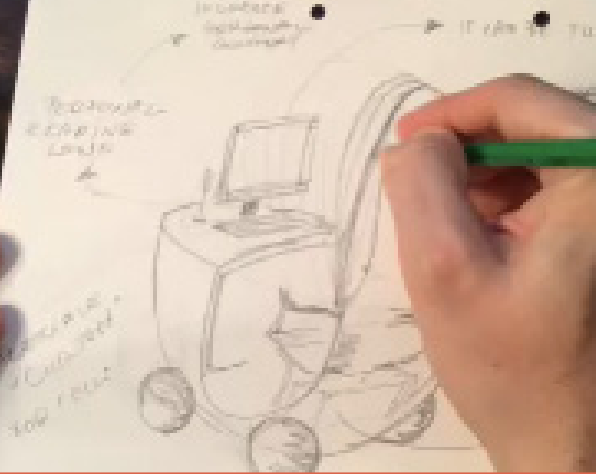


9



Staircase planning, Adaptable space, Presentation, Editing suite





Sample presentation, Rendered sections, Exploring with model, LightUp visual

Lajos Tanczos

Somerset House

CLIENT

Somerset House

LOCATION

Great Arch Hall, Westminster, London, United Kingdom

BRIEF

Redesign the Great Arch Hall of the Somerset House to a better entrance hall of the museum with a reception desk, a bar and exhibition area.

TYPE

Commercial design

SKILLS APPLIED

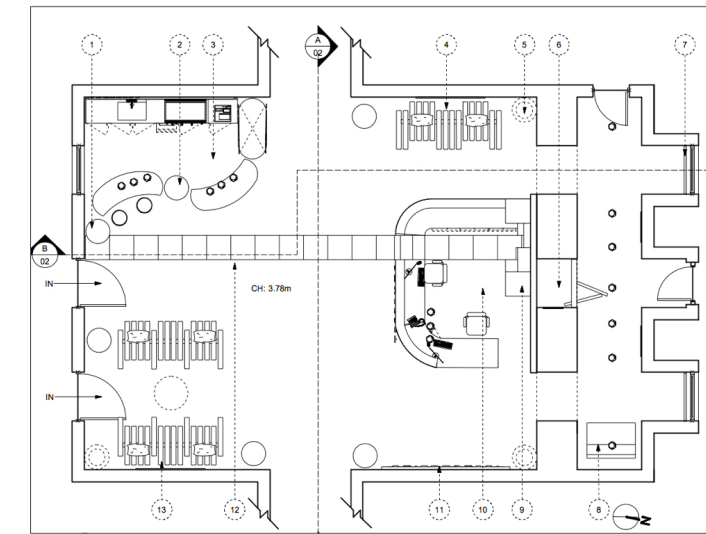
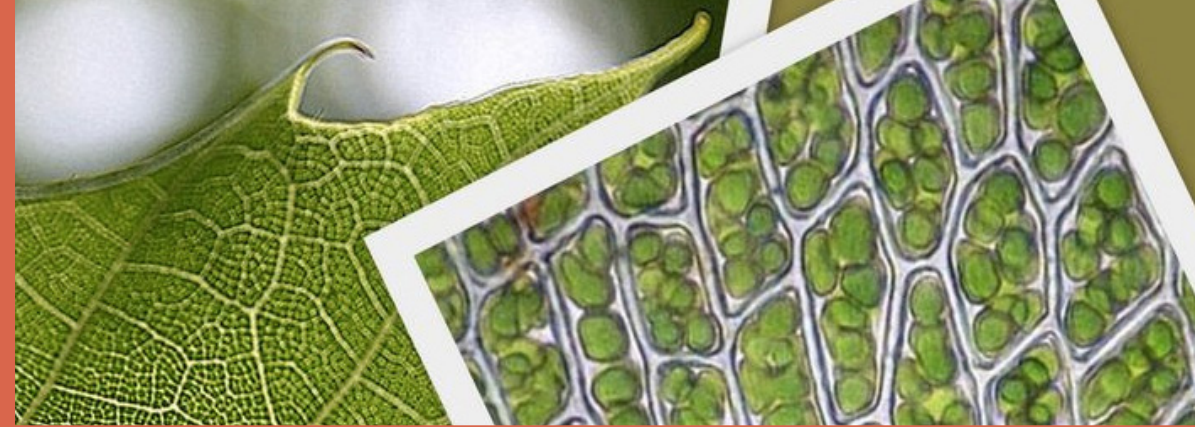
Space planning, technical drawing, rendering, sourcing, 3D visual presentation (SketchUp, Photoshop and KeyShot).



Great Arch Hall new reception

CONCEPT

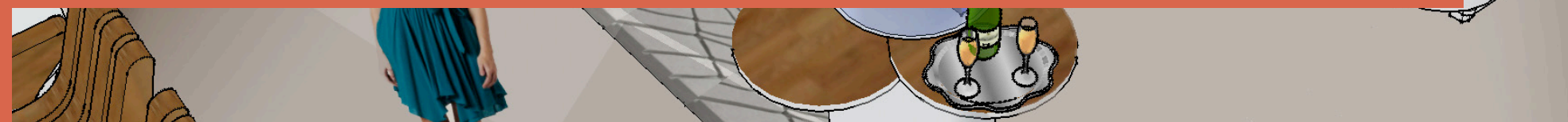
Transform and grow



DESIGN

The concept represents the idea of people transforming by interacting with their environment. The aim was to create an interior for visitors to actively discover it and designed so that its cafe can be changed to a champagne bar in the evening for events. The project started with an understanding of materials and exploring new innovative ones to be used, like Orto Living Covering or Luminoso, the lighting wood.

Plan, Rendered section, Event in the Hall





Innovative materials, Furnishing, Visual

Lajos Tanczos

Vivienne Westwood

CLIENT
Vivienne Westwood

LOCATION
Imperial Wharf, Chelsea, London, United Kingdom

BRIEF
The brief was to design a commercial space for Vivienne Westwood as part of a group project.

TYPE
Commercial design

SKILLS APPLIED
Skills used: design analysis, concept development, verbal presentation, visual presentation.

DESIGN
Based on the concept of hourglass, we have designed a space that is more than just an exhibition area for the Vivienne Westwood dresses. Here, the space is communicating the message that if people do not care, our planet is going to die, reflecting on social responsibility.



Changing world - Living and dying nature

Lajos Tanczos

Cole & Son

CLIENT
Cole & Son

LOCATION
London, United Kingdom

BRIEF
Cole & Son would like to see innovative ways in which wallpaper can be used within a design scheme, be it a hospital waiting room, residential space, school, bar, exhibition space, cinema, etc. This is not an exhaustive list and entrants are encouraged to be as creative with their use of wallpapers, and the space they are applied to, as possible.

TYPE
Commercial design – Competition

SKILLS APPLIED
Skills used: design analysis, concept development, verbal presentation, visual presentation.



Wallpaper in the underground

CONCEPT

Arrival

ARRIVAL



DESIGN

Arrival as a concept represents the positive emotions around the moment of arrival being in a cosy familiar space again where you can feel relieved, delighted, open and relaxed. The design aim is to change an everyday underground carriage to a real interior that resonates with the positive personal feelings connected to one's home. The design uses colourful and bold wallpapers in an innovative, creative and unusual way. This results in people being happier to enter the underground lifting commuting to another level.



Visuals





RATIONALE

Several options were developed as the design can be **tailor made for different underground lines**, according to the **target market** of the line (traditional, modern, feminine, masculine etc).

This solution is not only **increases awareness and intention** to buy Cole and Son wallpaper, but it also **adds value to the community** and it helps Transport for London to provide a better consumer experience.

Visuals



Underground interior - Circle line

unlimited_design
by lajos tanczos



Underground interior - Jubilee line

unlimited_design
by lajos tanczos

Sample boards



Underground interior - Central line

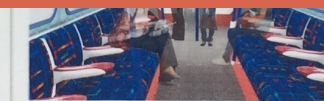


unlimited_design
by lajos tanczos



Sample boards

Underground interior - Piccadilly line



unlimited_design
by lajos tanczos

Lajos Tanczos

Abby Cullen

CLIENT

Abby Cullen, private client

LOCATION

Hoxton, London, United Kingdom

BRIEF

Design a private living space in a 100m² apartment

TYPE

Residential design

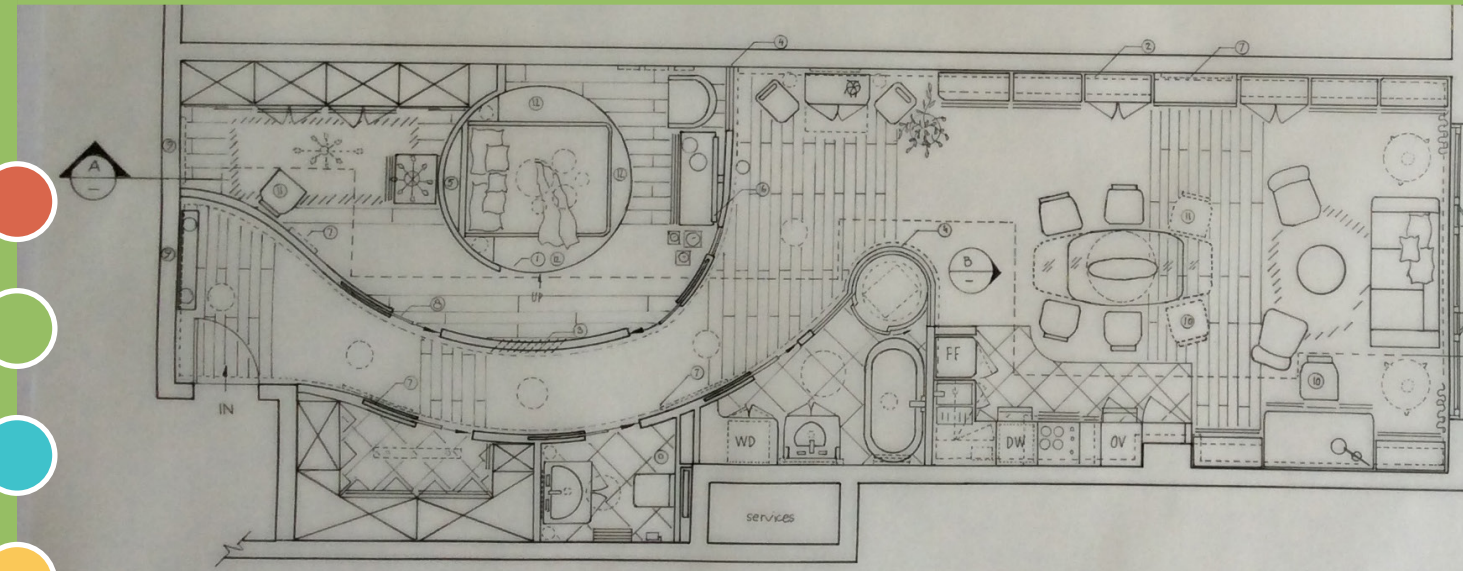
SKILLS APPLIED

Space planning, technical drawings,
SketchUp, hand rendering, sourcing,
furniture and materials presentation, KeyShot



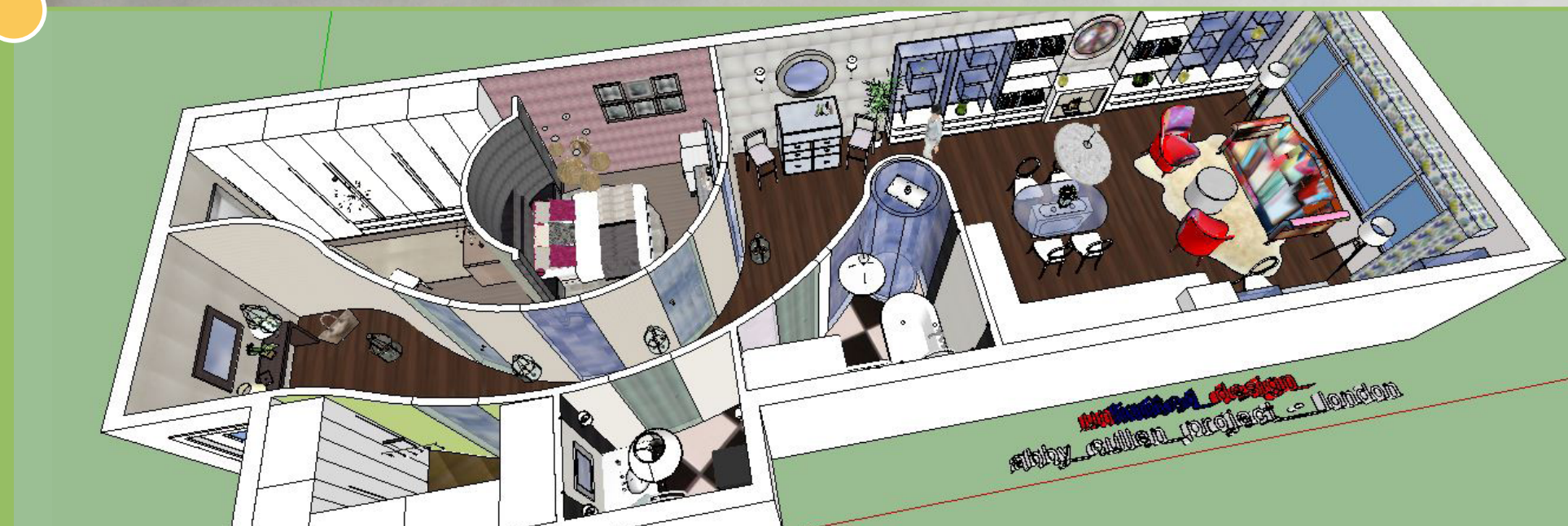
Living-dining room, Visual

CONCEPT

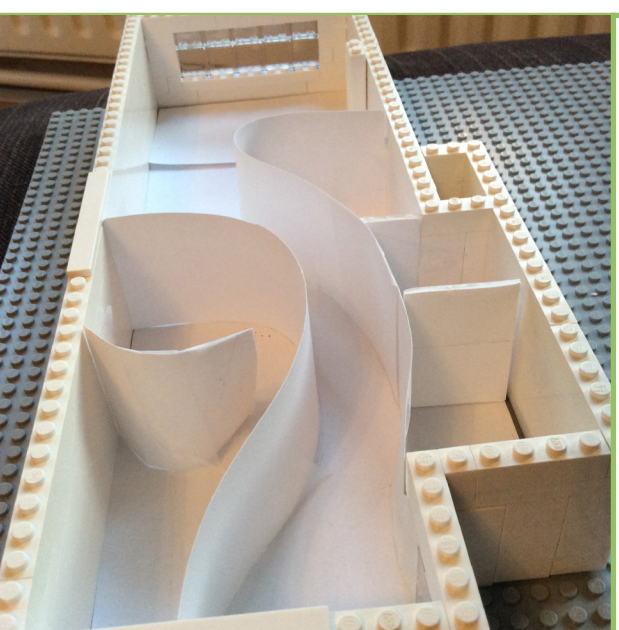


DESIGN

The concept reflects Abby's voyage from the vibrant outside world to her inner peace that she finds in her relaxing nest. The buzzy city life and her globe-trotting experience has been reflected by a bohemian twist, but light and calming natural colours and textures help her in recreation and reflect her nature loving side.



SketchUp model, Technical drawings



Sample boards, Furnishing, Model, Rendered drawings

unlimited
design
by lajos tanczos

Project
Abbey Cullen
Mundy Street
Hoxton, London

Lajos Tanczos

Maison du Monde

CLIENT
Maison du Monde

LOCATION
France

BRIEF
The brief was to design a multi-purpose furniture for Maison du Monde, a well-known child furniture manufacturer that is fitting their existing product line-up.

TYPE
Furniture design

SKILLS APPLIED
Design analysis, technical drawing, visual presentation.

DESIGN
Based on the film concept the idea was to create a furniture for small kids that can be used as a storage, a seat or a desk at the same time. They can personalise and decorate it with flexible changeable surfaces or images of their favourite films. Different board game surfaces can be inserted onto the top of the items for playing. Millions of individual variations can be created this way.



Interactive, multifunctional kid furniture

Lajos Tanczos

History of Styles Reference book, Essays

BRIEF

During the interior design studies in KLC, several essays were written about different topics that have improved the understanding of historical styles, lighting and restaurant design.

PROJECT 1

Analysis of lighting plans in a Design-Award winning restaurant in Antwerp. In the thesis the restaurant's lighting plans have been critically analysed.

PROJECT 2

History of Styles Reference book
During this project a visual book was created based on the review of the different styles in Great Britain and Continental Europe.

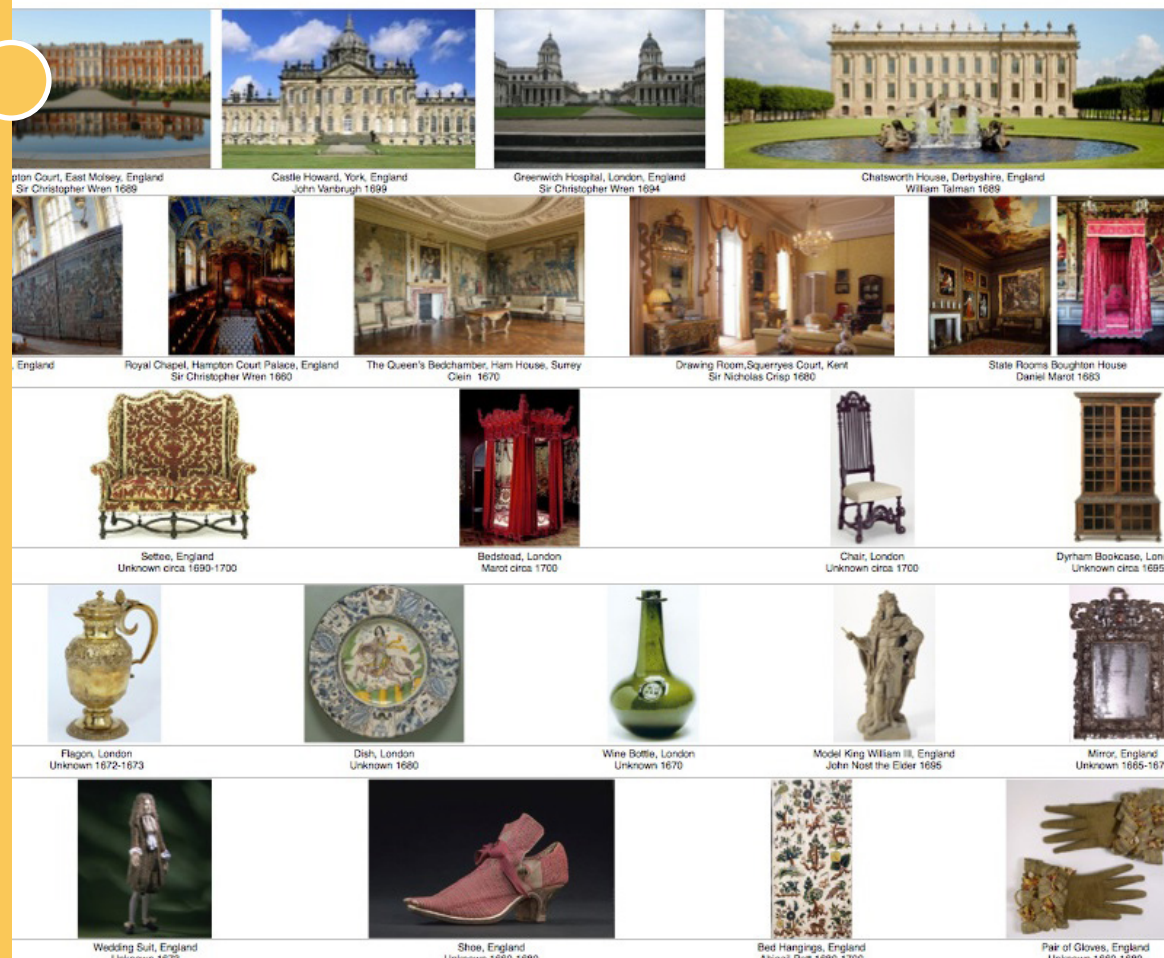
PROJECT 3

An essay was written about the development of art nouveau style in London and in Brussels, analysing the works of Mackintosh and Victor Horta.



Restoration & William and Mary 1660 - 1702

1660 when the monarchy was restored after the English Civil War, Charles II came to the throne after being in exile in France and the Netherlands for 12 years. Charles and his followers had observed and acquired a taste for new developments in Continental Europe. He set out to refurbish the Royal Palaces and took influence from the Baroque style that he had come to admire. After the Fire of London in 1666 Architect Christopher Wren was appointed to rebuild numerous city churches and to develop a plan for elaborate carving & high relief decoration. Lots of rich finishes with the use of silver & gold. Natural motifs were introduced into design, such as the Acanthus leaf. Spiral Twisted woodwork was incorporated into the furniture. The Baroque style was fully the arrival of skilled Dutch and German cabinet makers into the country. It also benefited from the influx of French Huguenot craftsmen - upholsterers, silversmiths, silk weavers and joiners, escaping religious persecution in France. As a result, the craft style was elegant and ornate with a real sense of drama. Objects were decorated with plant life and scrolling foliage. Interiors were rich and luxurious with the use of upholstery & tapestries, embossed leather, damasks and gold gilt wood furniture. Jers of different coloured woods, was very popular. The work of architect and designer Daniel Marot was particularly influential at this time. He designed every detail of a room, from walls to furniture to lighting and soft furnishings. This is particularly



Lajos Tanczos

Window Treatments, Soft Furnishing

BRIEF

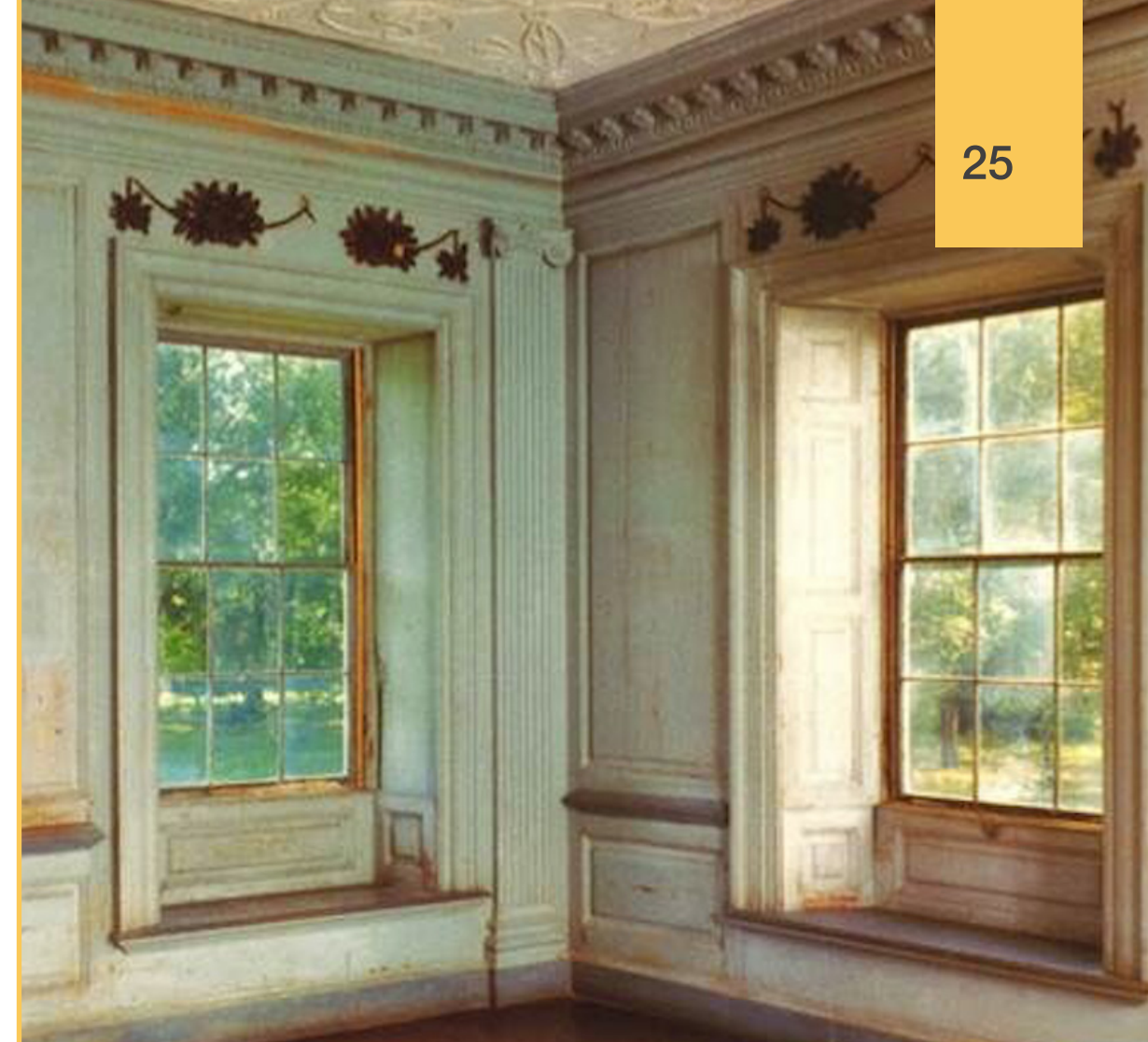
The TATAI project involved developing window treatments and soft furnishing for several different scenarios.

WINDOW TREATMENTS

For example, one of the first projects was to develop window treatment for a boutique hotel. Natural coloured drapery was sourced with classical patterns, a matching beige voile and gold classical rails were used.

SOFT FURNISHING

The second example is a modern partition screen for young people, where a bold mix of modern materials with matching colours were designed. It provides an uplifted, modern atmosphere to the space.

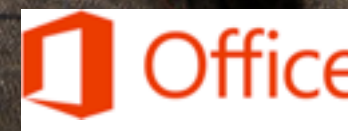
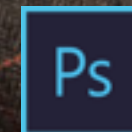


Lajos Tanczos

SUMMARY

Upcoming KLC graduate.
Experience in international project management, including
budget management and people management skills.

Syllabus included:
Vectorworks, SketchUp, Vectorworks, AutoCAD (basics),
LightUp, KeyShot, In-Design, Photoshop,
planning and ergonomics, detailed working drawings,
presentation techniques, sketching, colour, textiles in interiors,
building structure, lighting, history of style, finishes and furniture,
professional practice, specifications, costings, presentations,
residential and commercial design



EDUCATION

2014- KLC School of Design

(London, United Kingdom)

Diploma in Interior Design (Blended Learning)

Central-European Centre for Brokers

(Budapest, Hungary)

Broker's and securities law examinations

University of Economics

(Budapest, Hungary)

Postgraduate, Master's degree, Finance

Budapest Business School

(Budapest, Hungary)

Bachelor's degree, Business Analysis

LANGUAGES

English - working proficiency

Hungarian - Native

Dutch - basic

EXPERIENCE

ING Bank Group

(Brussels, Belgium)

Program Manager, Global Portfolio Management

Bank of New York Mellon

(Brussels, Belgium)

Vice President, Global IT Projects

Temenos Partner

(Budapest, Hungary)

Manager, Consultant's Group

Intesa Sanpaolo Bank S.p.A.

(Budapest, Hungary)

Senior Manager, Payments, Securities

INTEREST

Art, history

Travelling

Biking, hiking

Curriculum Vitae

Unlimited Design
Avenue des Myrtilles 16
1950 Crainhem, Belgium
+32 471 952 562
info@unlimited-design.co.uk
www.unlimited-design.co.uk



unlimited design